

Downloads

Internal HDD

ES-Tool
Advanced Format Utility
External HDD

[ESTOOL301v_CDROM.zip](#) (Size : 1.87 MB)
[ESTOOL301v_FDD.zip](#) (Size : 773 KB)

Preliminary

ES Tool (The Drive Diagnostic Utility) is made with the aim of testing a Samsung hard disk drive while it is installed inside a PC, regardless of the status of user's operating system. In fact of the drives returned to Samsung, a large percentage are NTF("No Trouble Found") after testing. So it is strongly recommended to test the drive if it is truly defective by a few fundamental troubleshooting of ES Tool first, to avoid user's unnecessary effort and inconvenience of replacing a good drive.

ES Tool can test a drive solely manufactured by Samsung. [It is strongly recommended to back up the user's significant data in advance](#) because ES Tool has a Write operation that can erase it. Samsung has no responsibility of lost data.

The version on pictures may be different from that you download.

Executing

ES Tool is a DOS based utility so it is needed to prepare a bootable 1.44-MB diskette in advance.

Download ES Tool.exe on the diskette prepared from the internet.

Reboot the system by above diskette.

Execute the program by typing A:\> ES Tool.exe in DOS prompt.

Please Back-up your data before executing this program.

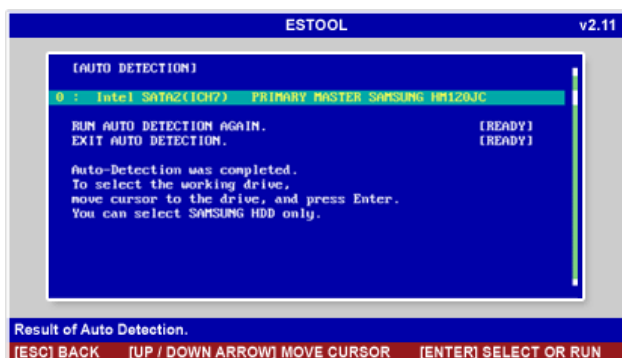
Functions

DRIVE DIAGNOSTIC
LOW LEVEL FORMAT
SET MAX ADDRESS
SET MAX UDMA MODE
AAM MODE (Automatic Acoustic Management)
LBA MODE
ENABLE SMART
DISABLE SMART
INFORMATION
AUTO DETECT
ABOUT ESTOOL
EXIT TO DOS



Top screen

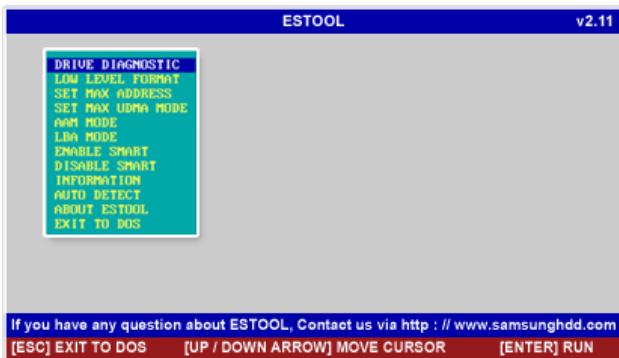
If you agree above DISCLAIMER, press Y.



Auto detection

Select the HDD which you want to test

Use the UP/DOWN ARROW keys

**Drive Diagnostic-1**

If you agree above DISCLAIMER, press Y.

**Drive Diagnostic-3**

If you agree above DISCLAIMER, press Y.

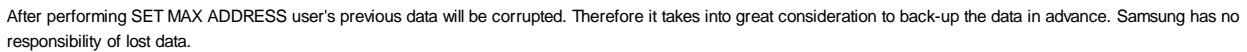
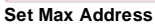
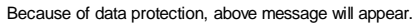
If you want to scan entire surface, press 'y'.

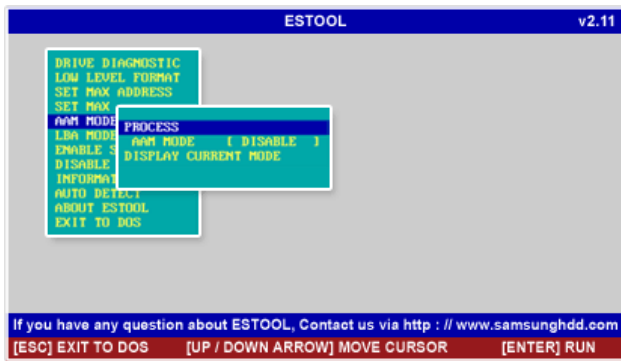
**Drive Diagnostic-4**

If there is no error on it, you will get above message.

**Low Level Format-1**

You can erase your drive partially or entirely.





AAM Mode : Automatic Acoustic Management Mode

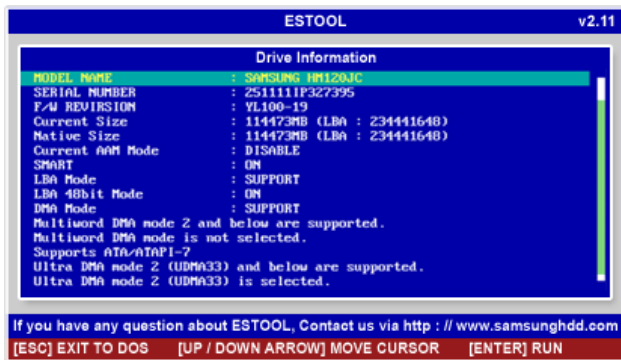
You can select a proper seek mode among FAST/MIDDLE/QUIET in accordance with user's circumstance.

Select the proper AAM by selecting AAM MODE (Quiet/Middle/Fast is changed by pressing Enter Key) and perform PROCESS by pressing Enter Key.

DISPLAY CURRENT MODE represents current AAM status.

Performance : Fast>Middle>Quiet (Fast is the best)

Acoustic Noise : Fast>Middle>Quiet (Quiet is the best)



Drive Information

You can see your drive's information.

[ESTOOL301v_CDROM.zip](#) (Size : 1.87 MB)

[ESTOOL301v_FDD.zip](#) (Size : 773 KB)