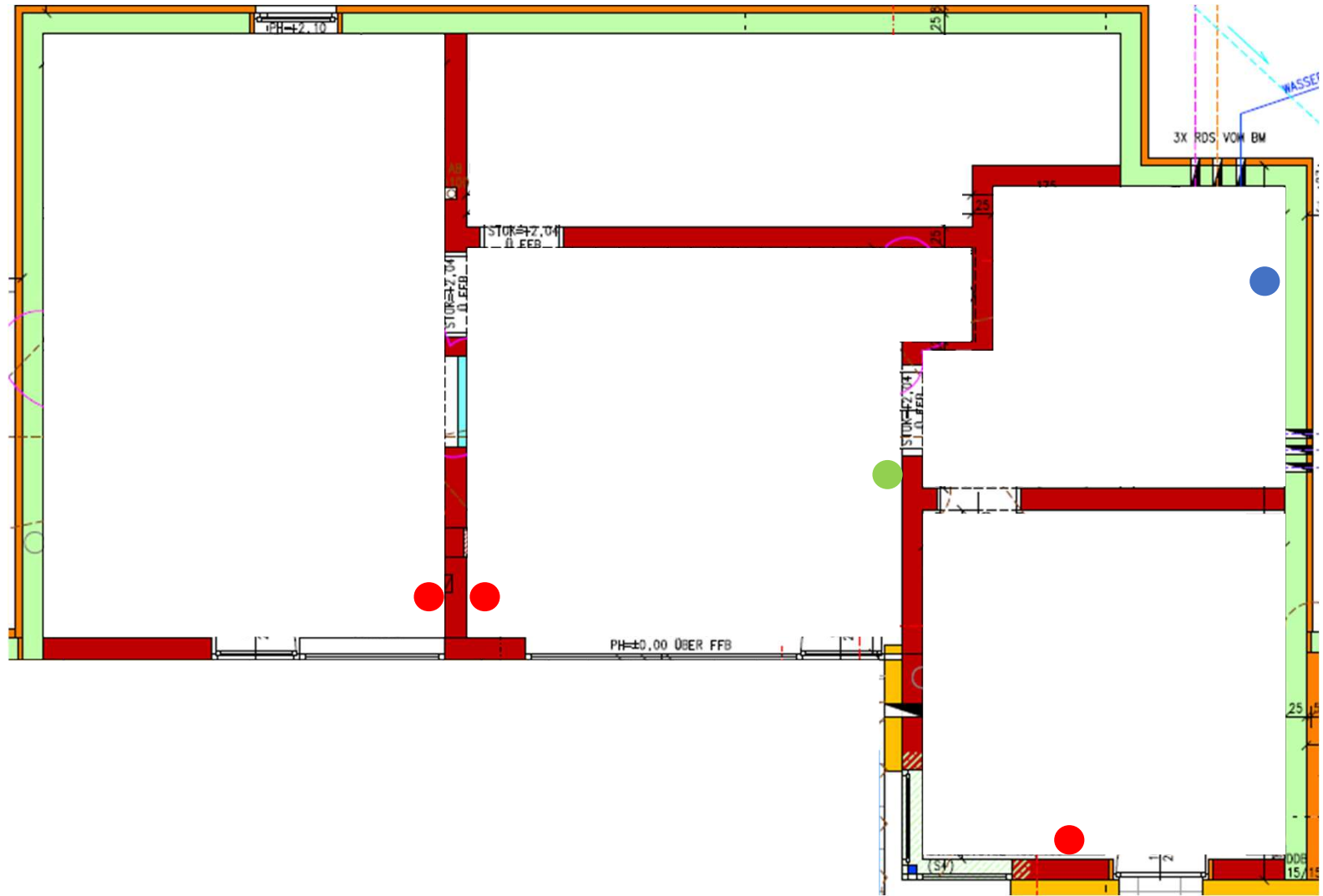
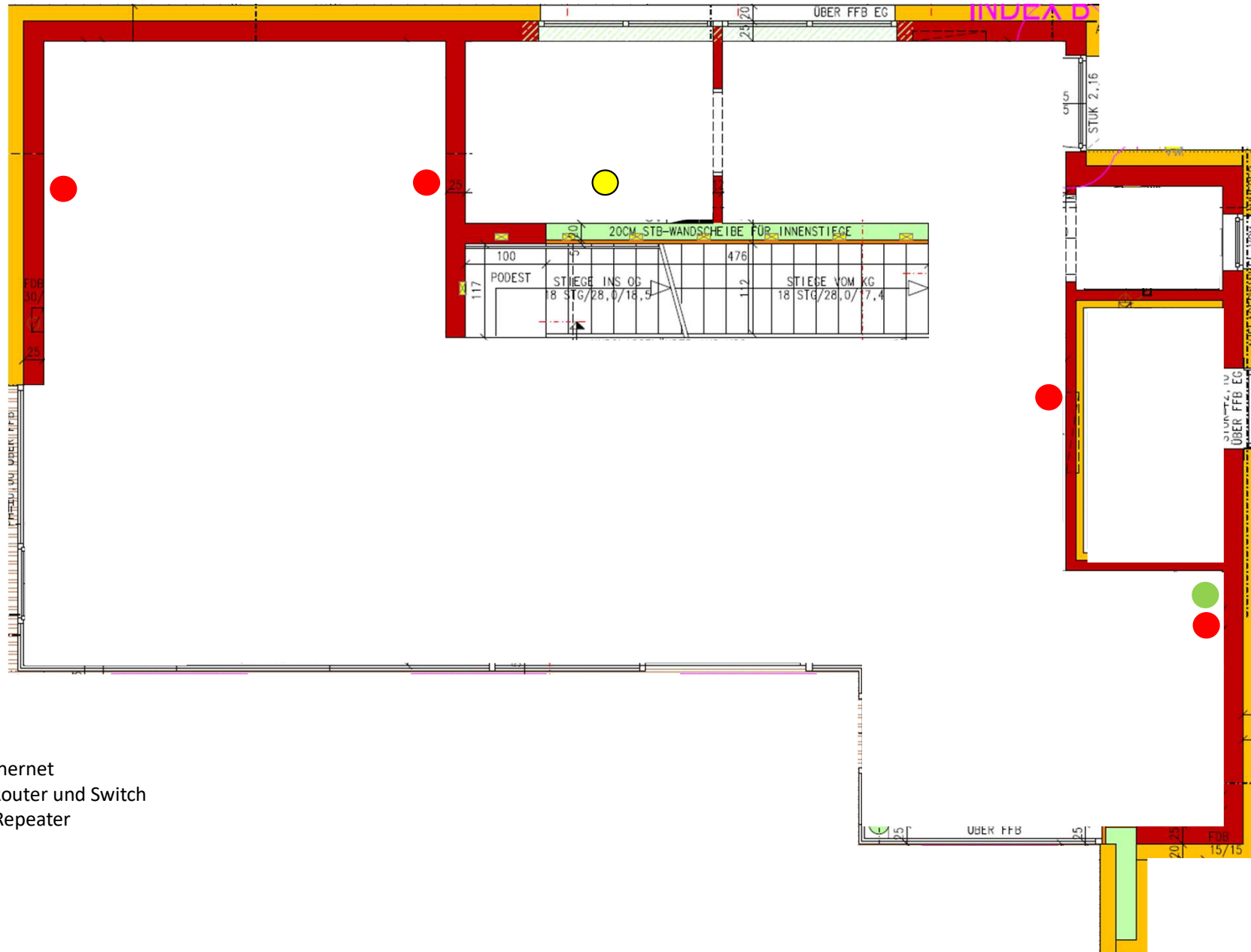


KG

- Roter Punkt = Ethernet
- Blauer Punkt = DSL Zuleitung
- Grüner Punkt = Repeater





EG

Roter Punkt = Ethernet

Gelber Punkt = Router und Switch

Grüner Punkt = Repeater

OG

Roter Punkt = Ethernet

Grüner Punkt = Repeater

