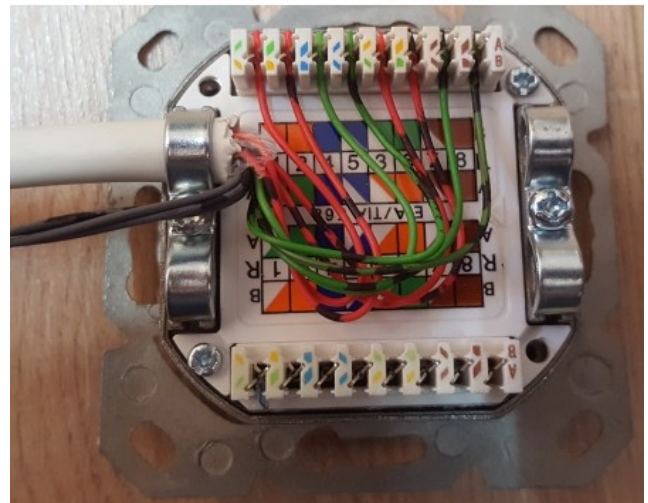
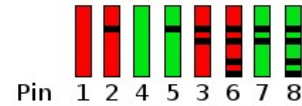
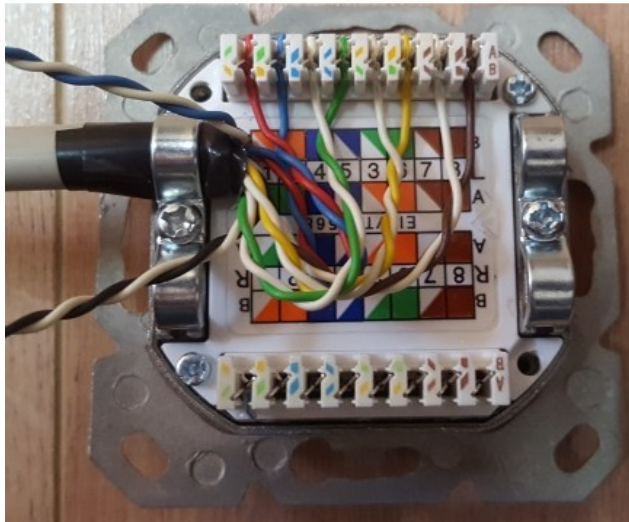
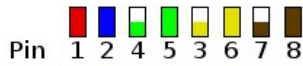


# Belegung und Kabel-Farbcode für RJ45-Stecker

Adernpaar	Pins	EIA/TIA 568A	EIA/TIA 568B	IEC	REA	DIN 47.100
1	4/5	blau/weiß	blau/weiß	weiß/blau	weiß/blau	weiß/braun
2	3/6	weiß/orange	weiß/grün	rot/orange	türkis/violett	grün/gelb
3	1/2	weiß/grün	weiß/orange	schwarz/grau	weiß/orange	grau/rosa
4	7/8	weiß/braun	weiß/braun	gelb/braun	türkis/violett	blau/rot



	100 MBit/s	1000 MBit/s
J-YY ø0,6mm	85m	60m
J-2Y(St)Y ø0,6mm	100m	80m
Erdkabel A-02YSF(L)2Y ø0,6mm	80m	55m
Erdkabel A-02YSF(L)2Y ø0,8mm	95m	65m
J-Y(St)Y 2x2 ø0,6mm	45m	-
J-Y(St)Y 2x2 ø0,8mm	55m	-
J-Y(St)Y >4x2 ø0,6mm	35m/45m*	20m
J-Y(St)Y >4x2 ø0,8mm	40m/50m*	25m
Netzwerkkabel CAT5e/6/7	100m	100m

