

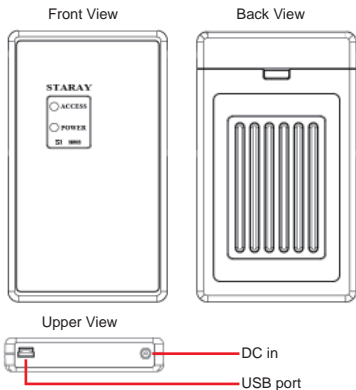
S125-1S-B2

User Manual

Version : 1.0 (April, 2008)

A. Introduction

a. Appearance



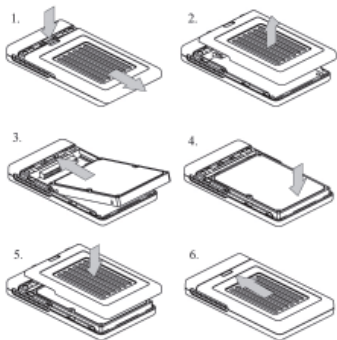
b. LED Indicator Function:

S1 Status	LED Indicators	
	Power	Access
Power on	Light Blue	—
Read/Write	Light Blue	Red Light Twinkling

c. Accessories:

- User Manual
- USB Cable
- Collection Box
- CD

B. Installation Guide



C. X-Zone Login

Please be sure there is no important information in your hard disk drive before installing hard disk drive in S1 because all information will be clear when resetting the invisible and visible zone.

After installing the hard disk drive and connecting to computer with USD cable, Windows operating system will detect the hard disk automatically and divide hard disk into two parts. One is visible public zone; the other one is invisible X-Zone. Each zone shares half capacity (See Figure C-1). After Windows operating system identifies S1, Public zone will be available to use.

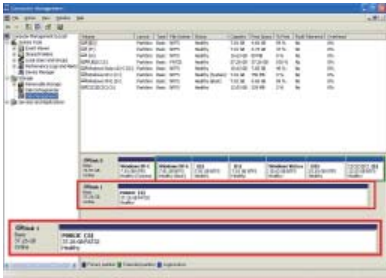


Figure C-1

Please execute "X-Zone.exe" (from CD-ROM) and you will see Figure C-2. Input the password (default setting is 12345), and press "Enter" to login.



Figure C-2



- Note :
1. S1 will reset the whole hard disk after pressing "Enter". Thus, please be sure that no document is transferring in public zone before pressing "Enter" bottom. Or the transferring file may be failed.
 2. After executing "X-Zone.exe" for first time from CD-ROM, the program "X-Zone.exe" will be copied to public zone automatically. After that, you can manage X-Zone with it.

D. Repartition X-Zone

If you would like to reset X-Zone capacity, please execute “X-Zone.exe” from CD-ROM or on public zone.

Input the password (default setting is 12345) and click “Management”, you will be authorized to change the capacity. As the Figure D-1, the capacity of the X-Zone (private part) will be reset through the scrolling bar. After making the decision, click “Repartition” to confirm new setting.

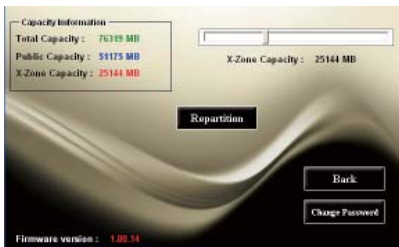


Figure D-1



- Note :
1. The X-Zone capacity can not be “0”.
 2. S1 will reset and format the whole hard disk while repartitioning. Thus, please be sure that there is no file transferring or on the hard disk (whatever on X-Zone or on public zone) before clicking “Repartition” bottom. Otherwise the transferring file may be failed and the information saved on S1 will be clear.
 3. The password will not be changed after “repartition”.

E. X-Zone Logout

If you do not want to use the whole hard disk, please remove the hard drive through Windows default setting "Safely Remove Hardware". However, if you still want to use the public zone, please logout X-Zone through "X-Zone.exe" and you will see figure E-1. Click "Exit X-Zone" and X-Zone will disappear.



Figure E-1



Note : S1 will reset the whole hard disk after clicking "Exit X-Zone". Thus, please be sure that no file is transferring in public zone before pressing "Exit X-Zone" bottom. Or the transferring file may be failed.

F. Reset Password

Please reset the password when using S1 for first time or revealing password to somebody else. Execute "X-Zone.exe", input password (default setting is 12345) and press "Management" to change password, and you will see Figure F-1. Please input the new password in the blank of "New Password", confirm it in the blank of "Confirm Password", and click "Change Password". Then, the new password will be set successfully. (Set new password with 4-6 characters of [a-z] [0-9])



New Password :

Confirm Password :

Change Password

Back

Firmware version : 1.00.14

Figure F-1

ATTENTION:

1. Please reset the password at the first time using S1 Series and keep the password in mind carefully. Once the password is lost, you will be not allowed to access X-Zone.
2. Whatever login or logout X-Zone or change its capacity, S1 will reset automatically. Therefore, please be sure no file is read or written in case the file fails.
3. If the hard drive has been set by S1, only the public zone can be seen and R/W normally when using this same HDD with other enclosure. X-Zone will be showed as unformatted part.
4. S1 uses the standard USB Bus Power (5V/500mA), and is able to connect to AC Adapter (5V/2A) which is not inclusive. If you use the large capacity HDD or your computer/laptop limits output electric power of the USB port, you may need extra AC Adapter to get your computer/laptop work smoothly. You need to pay the extra money for it.
5. The red connector of the inclusive USB cable is only for power supply, please do not simply connect this connector to the computer or S1 will not work.



6. All information contained in this manual has been carefully confirmed before printing, but the actual product specifications shall be in accordance with those at the time of delivery; any update to product specifications or relevant information may be found on www.STARAY.com.tw, and no separate notification will be made. If you have any query regarding the products of Raidon Technology, or you would like the latest product information, please contact us at supporting@raidon.com.tw, and we shall give you a reply as soon as possible.



Note : Raidon Technology will only provide technical support and services on products purchased directly from the company. General consumers and third-party buyers who did not purchase from the company should contact their distributor or supplier directly to receive faster support and response. If you did not purchase products directly from our company, please avoid contacting our company directly because your support and response may be delayed to your satisfaction.

Copyright© RAIDON TECHNOLOGY, INC. All rights reserved.